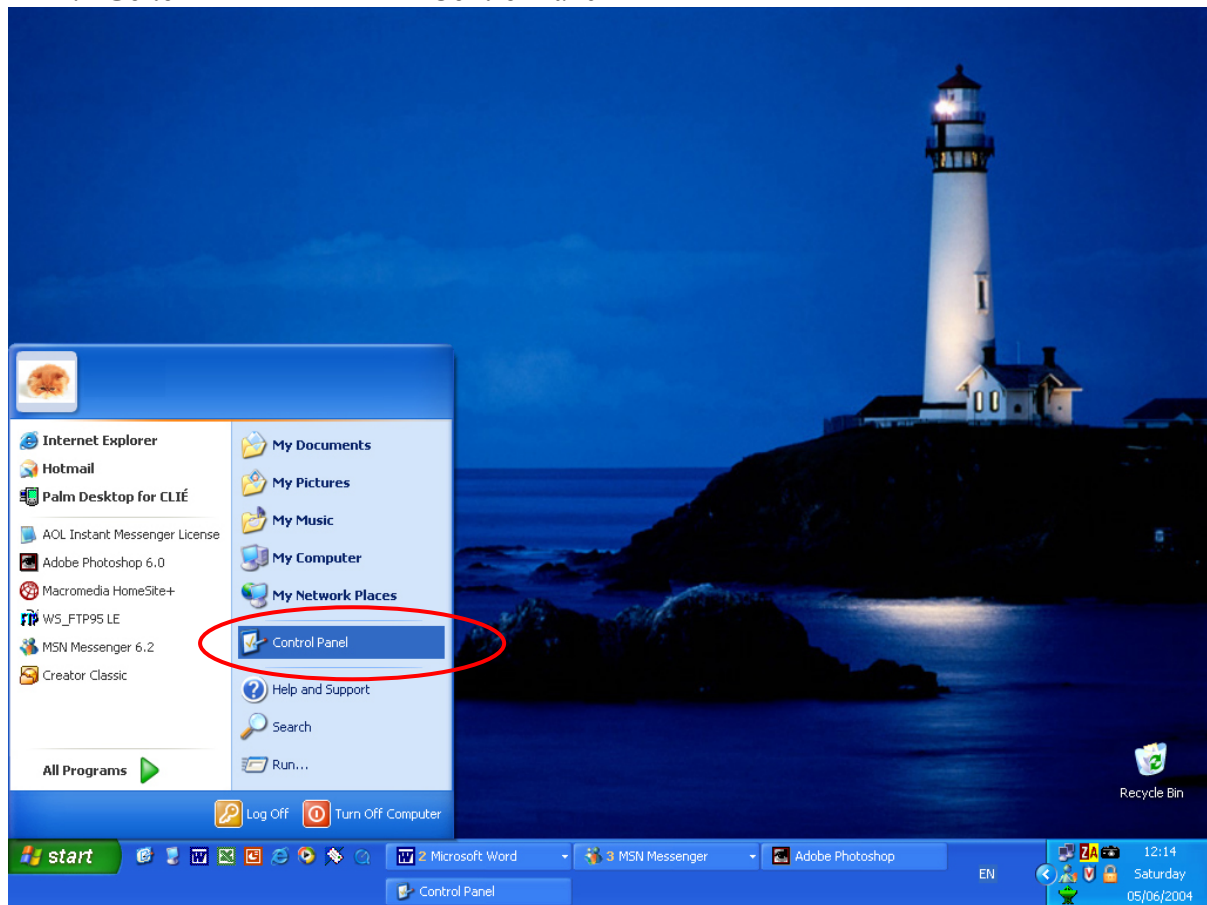


Setting up of Chinese Language Input in Windows XP HOWTO

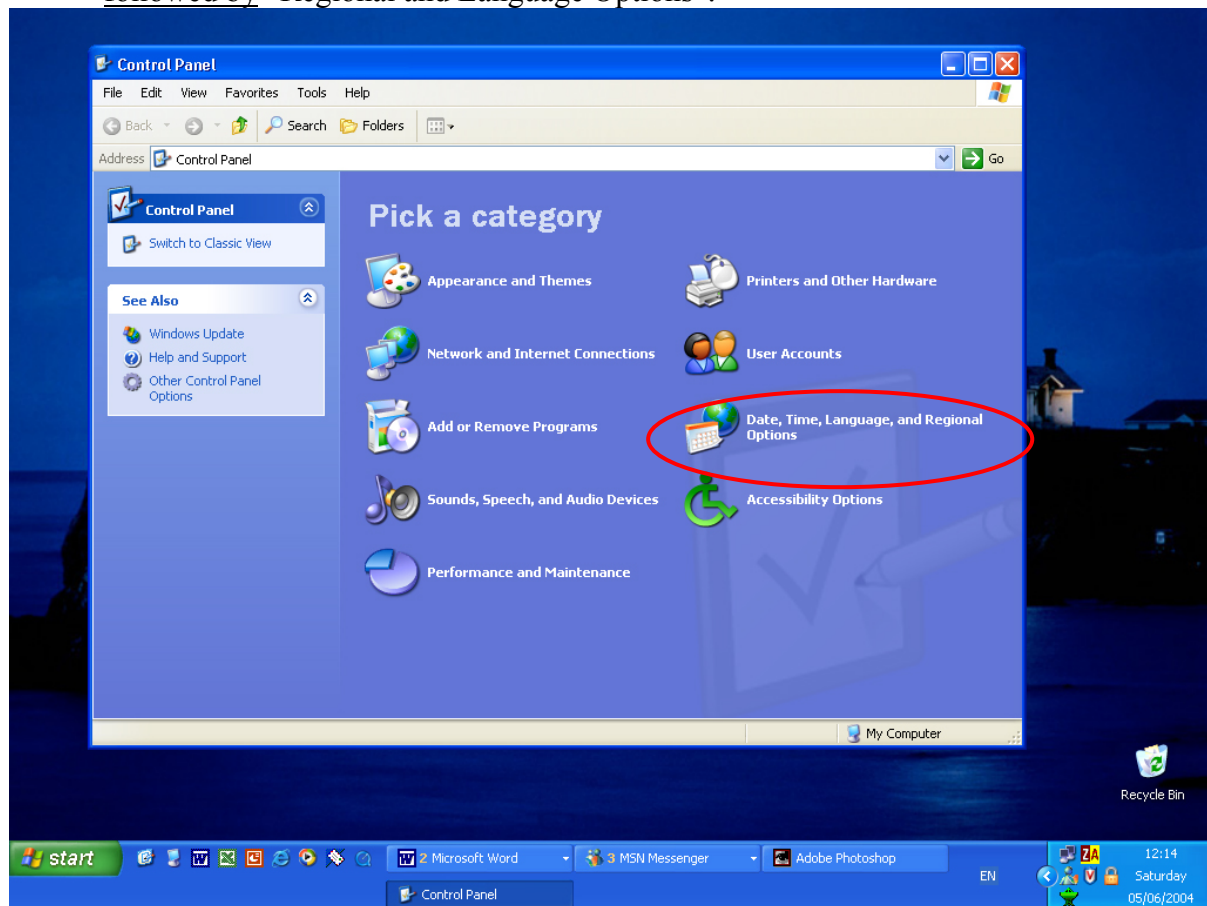
Copyright(c) 2004 yh2.com. Permission is granted to copy, distribute and/or modify this document under the terms of the GNU Free Documentation License, Version 1.2 or any later version published by the Free Software Foundation; with no Invariant Sections, no Front-Cover Texts, and no Back-Cover Texts. A copy of the license is obtainable at <http://www.gnu.org/licenses/fdl.html>

0. Standby the **Windows XP (WinXP) Installation CD**, as you will likely need to use it. During installation, restart Windows whenever you are requested to do so.

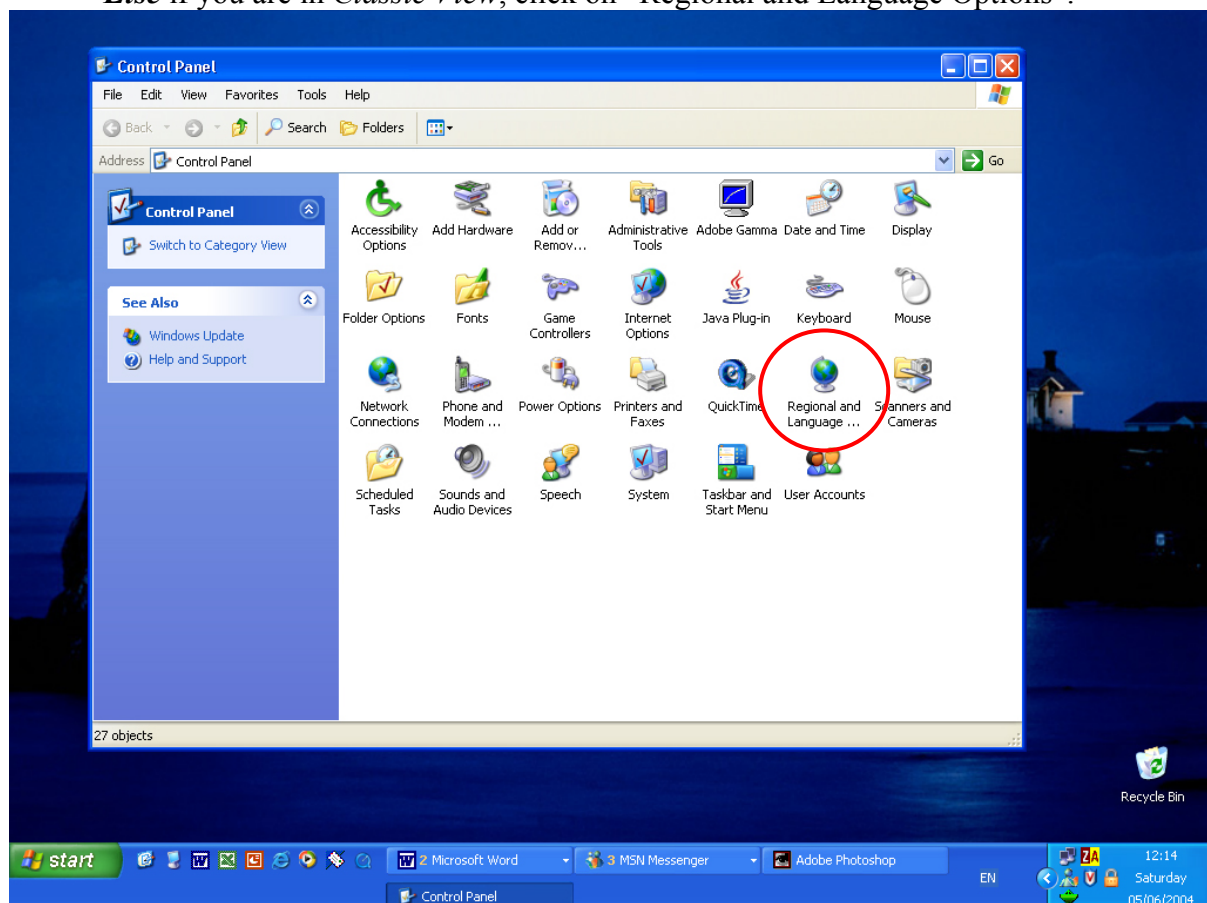
1. Go to  → “Control Panel”



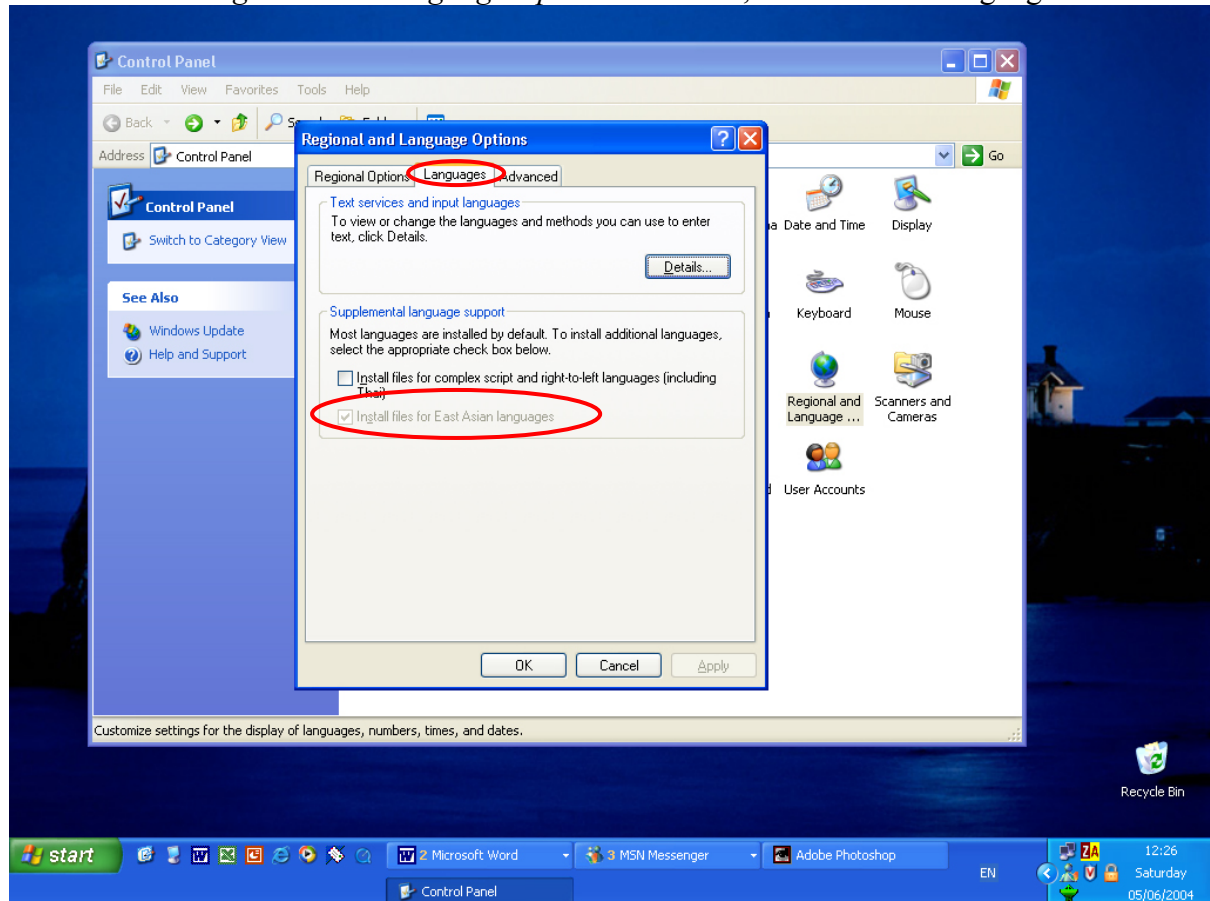
2. *If you are in **Category View**, click on “Date, Time, Language and Regional Options”, followed by “Regional and Language Options”.*



*Else if you are in **Classic View**, click on “Regional and Language Options”.*

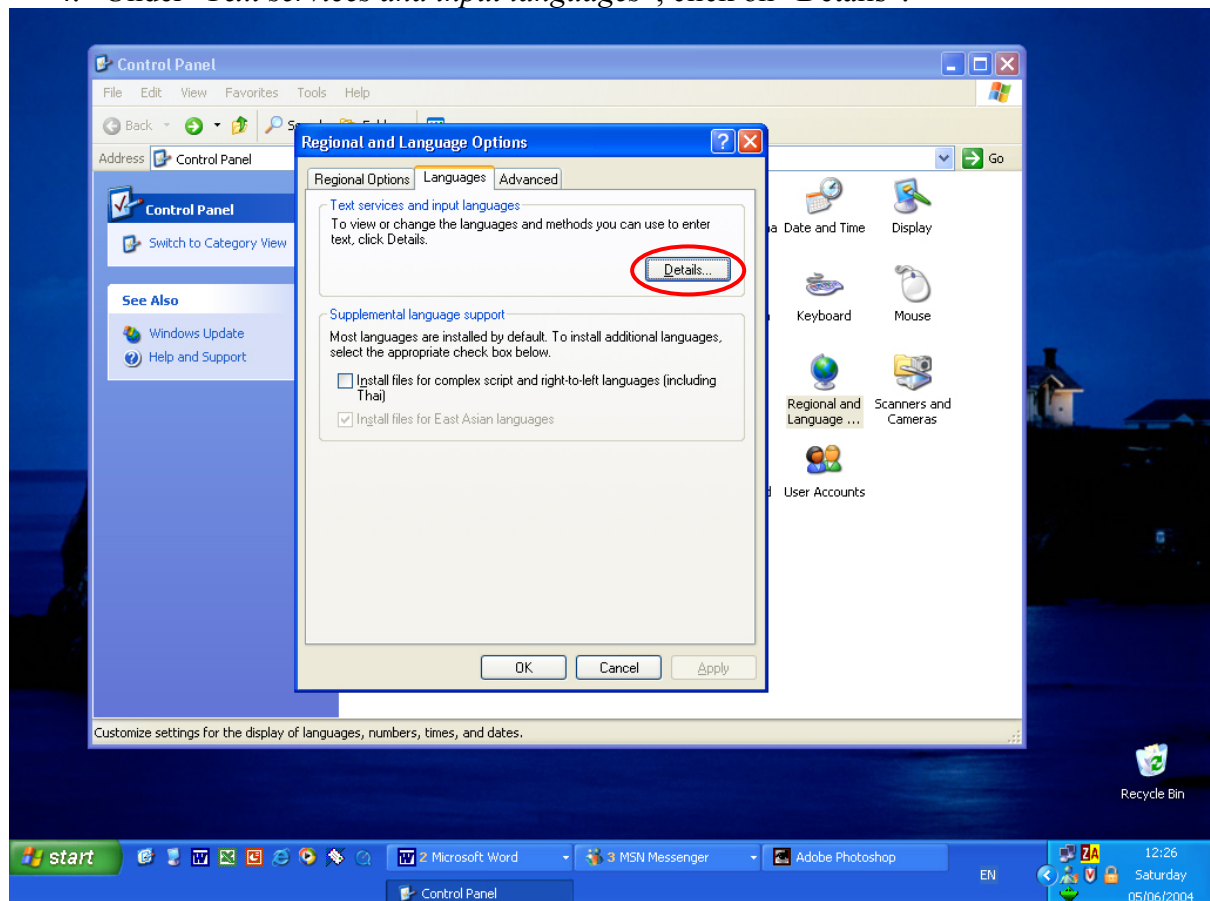


3. In the “Regional and Language Options” window, click on the “Languages” tab.

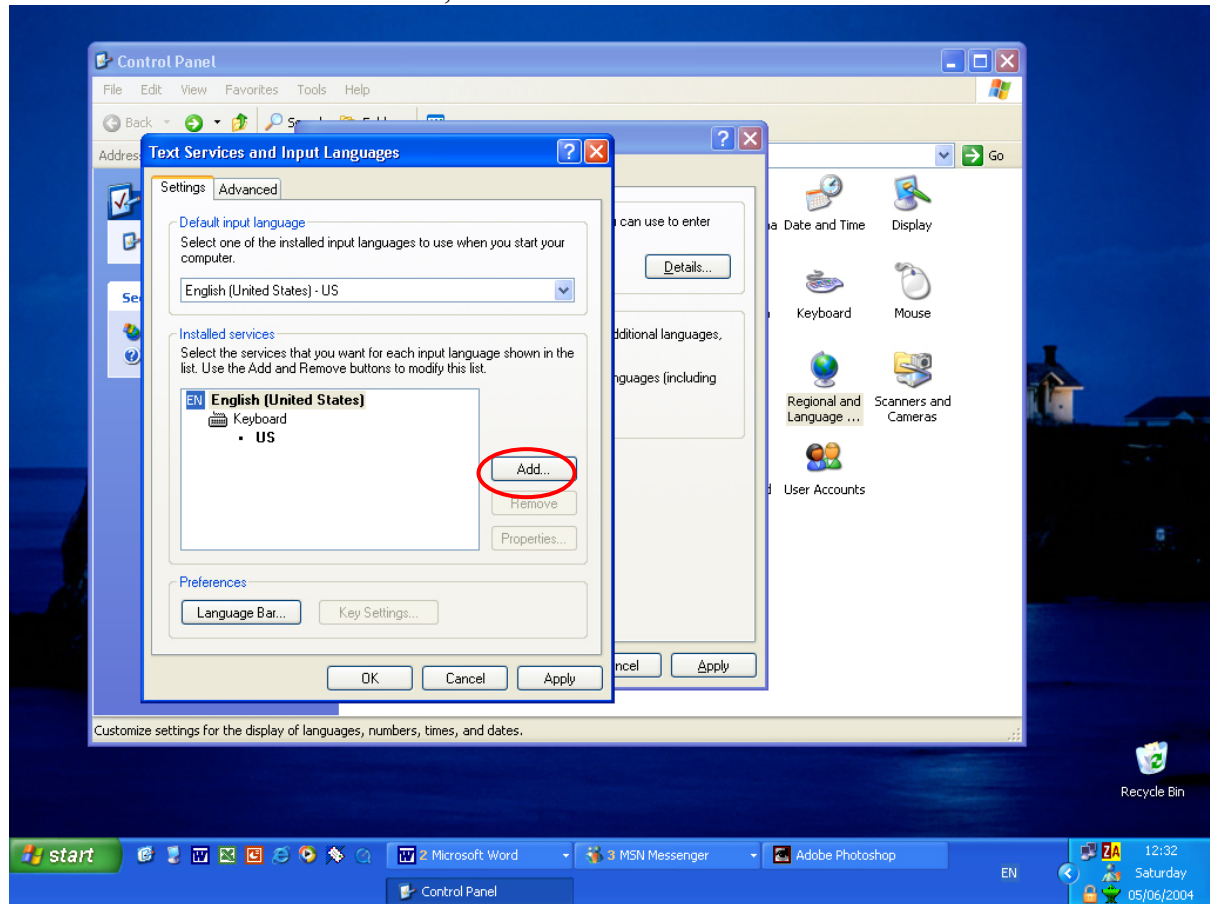


If “Install Files for East Asian languages” is **not** checked (with a ✓ in the box), *check* it, click “Apply” before proceeding. (NOTE : You will most likely need your WinXP Installation CD at this point.)

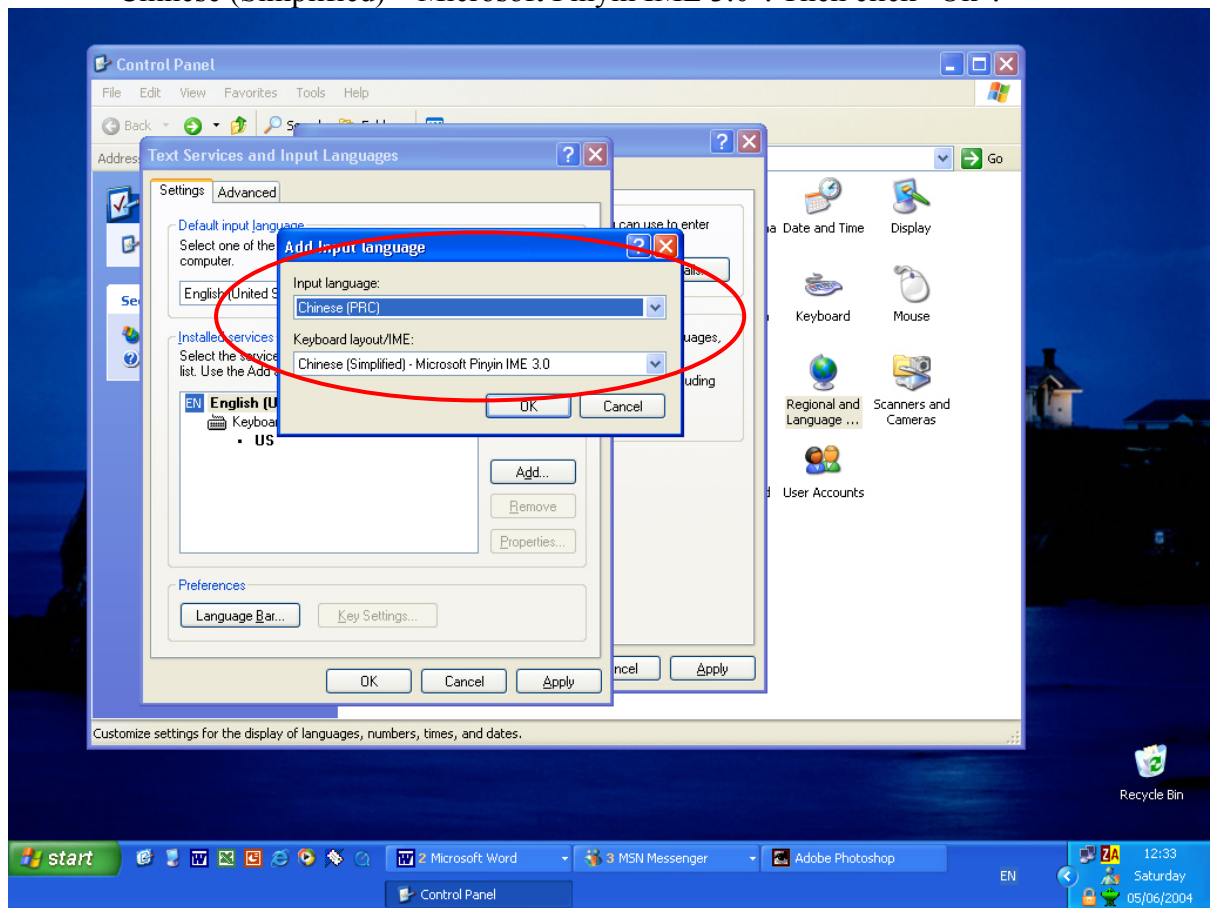
4. Under “Text services and input languages”, click on “Details”.



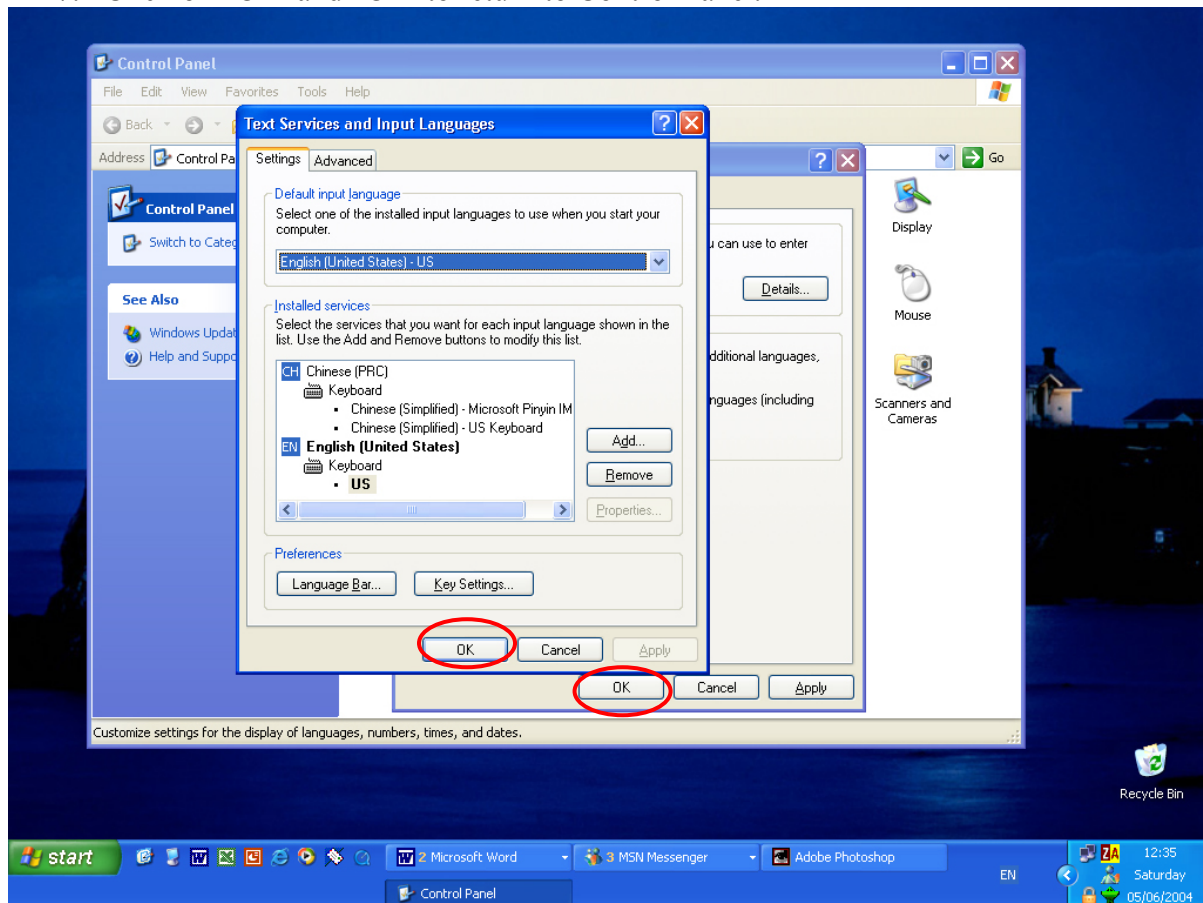
5. Under “*Installed services*”, click on “Add”.



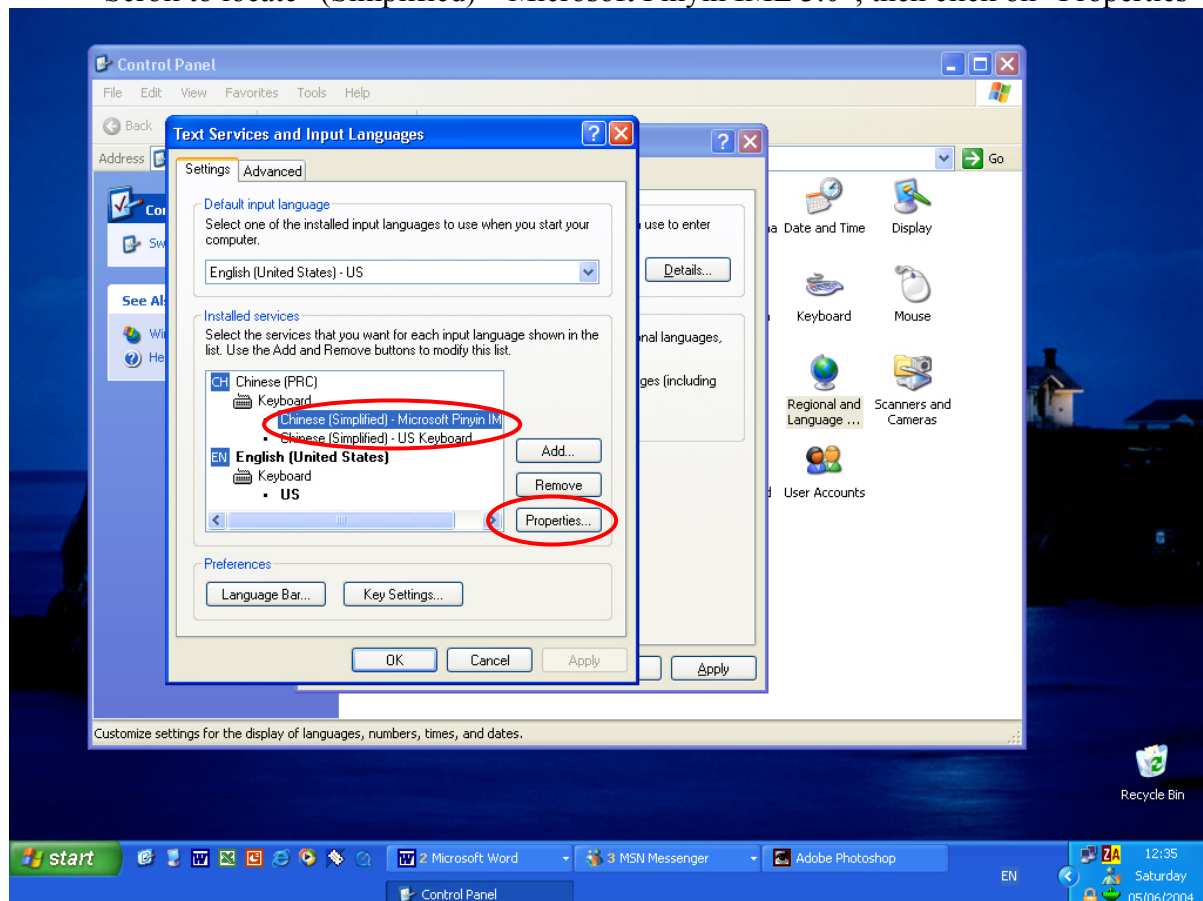
6. Under “*Input language*”, select “Chinese (PRC)”. Under “*Keyboard layout*”, select “Chinese (Simplified) – Microsoft Pinyin IME 3.0”. Then click “Ok”.



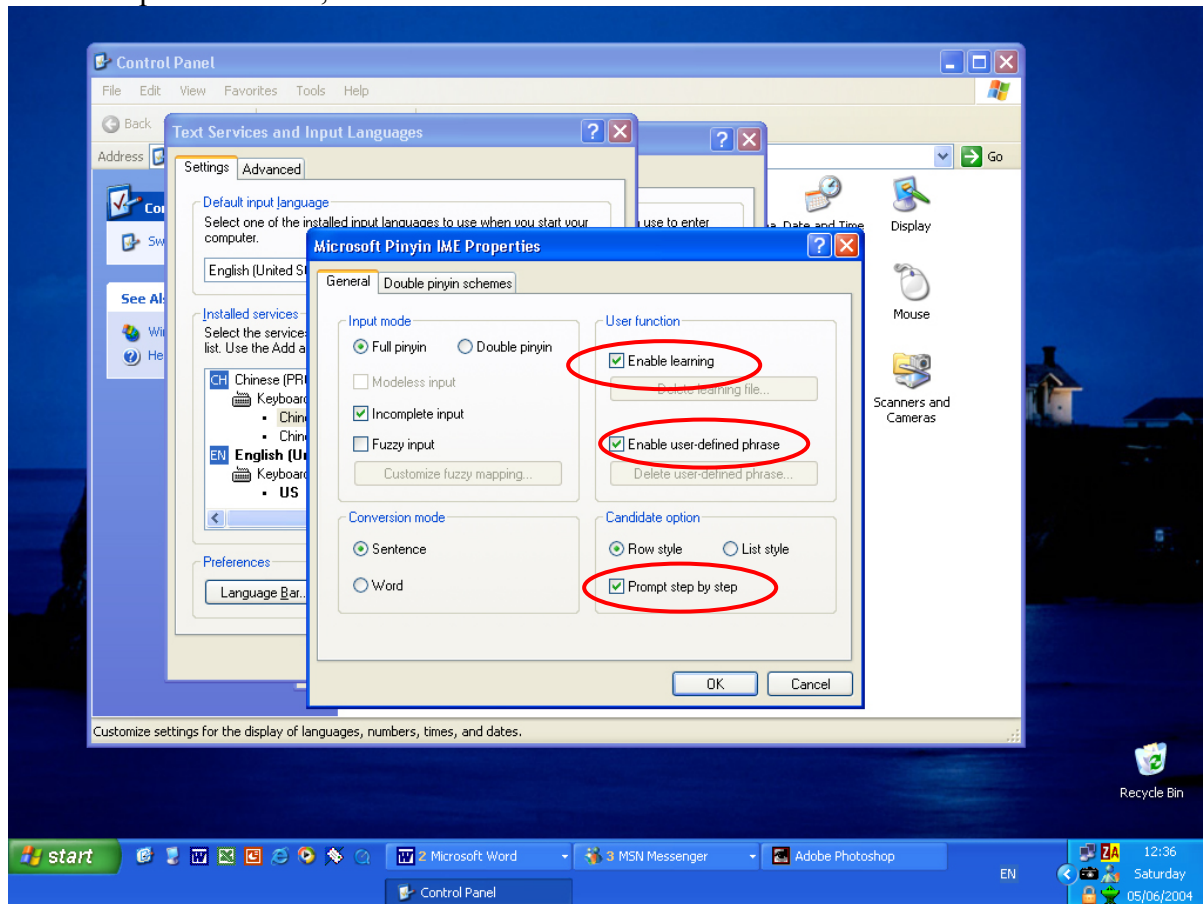
7. Click on “Ok” and “Ok” to return to Control Panel.



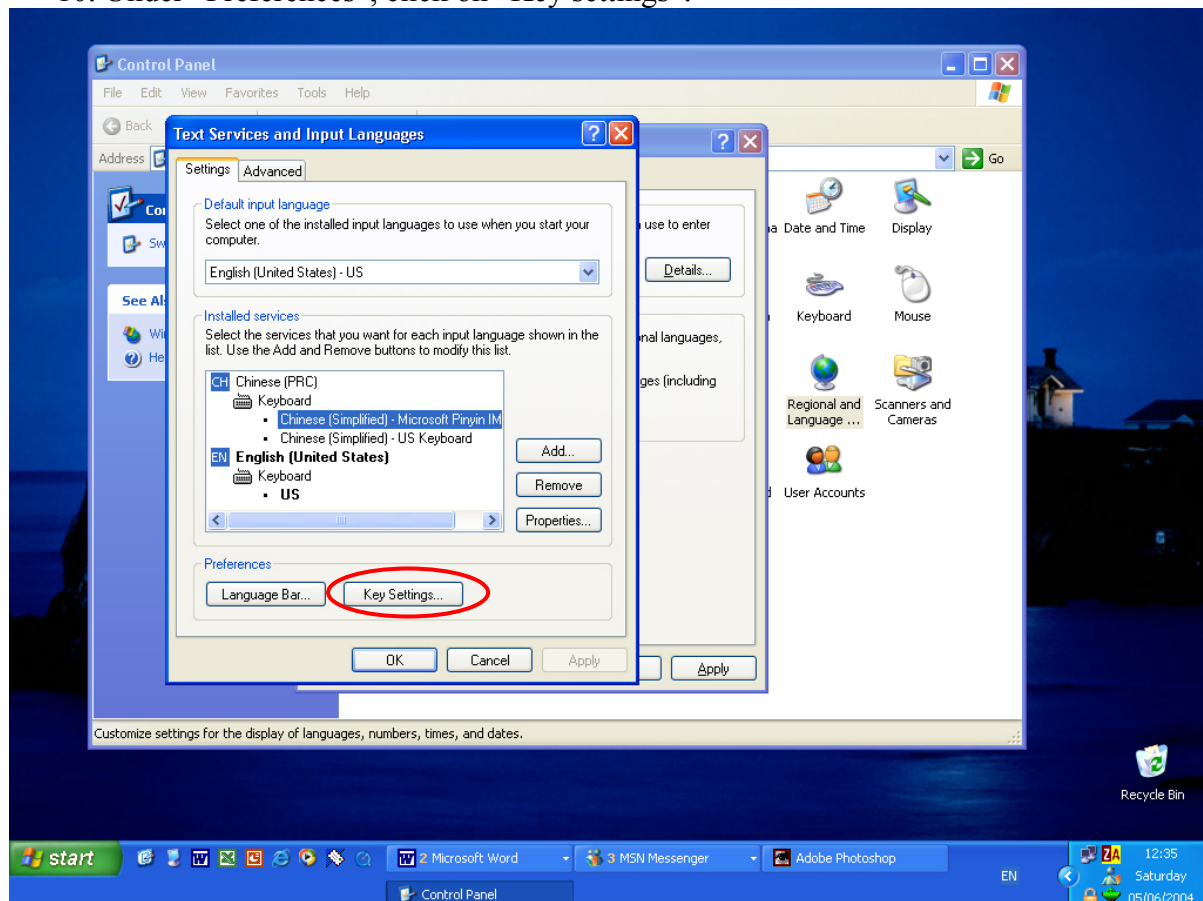
8. Repeat Steps 2 to 4 to return to the “Text Services and Input Languages” window. Scroll to locate “(Simplified) – Microsoft Pinyin IME 3.0”, then click on “Properties”.



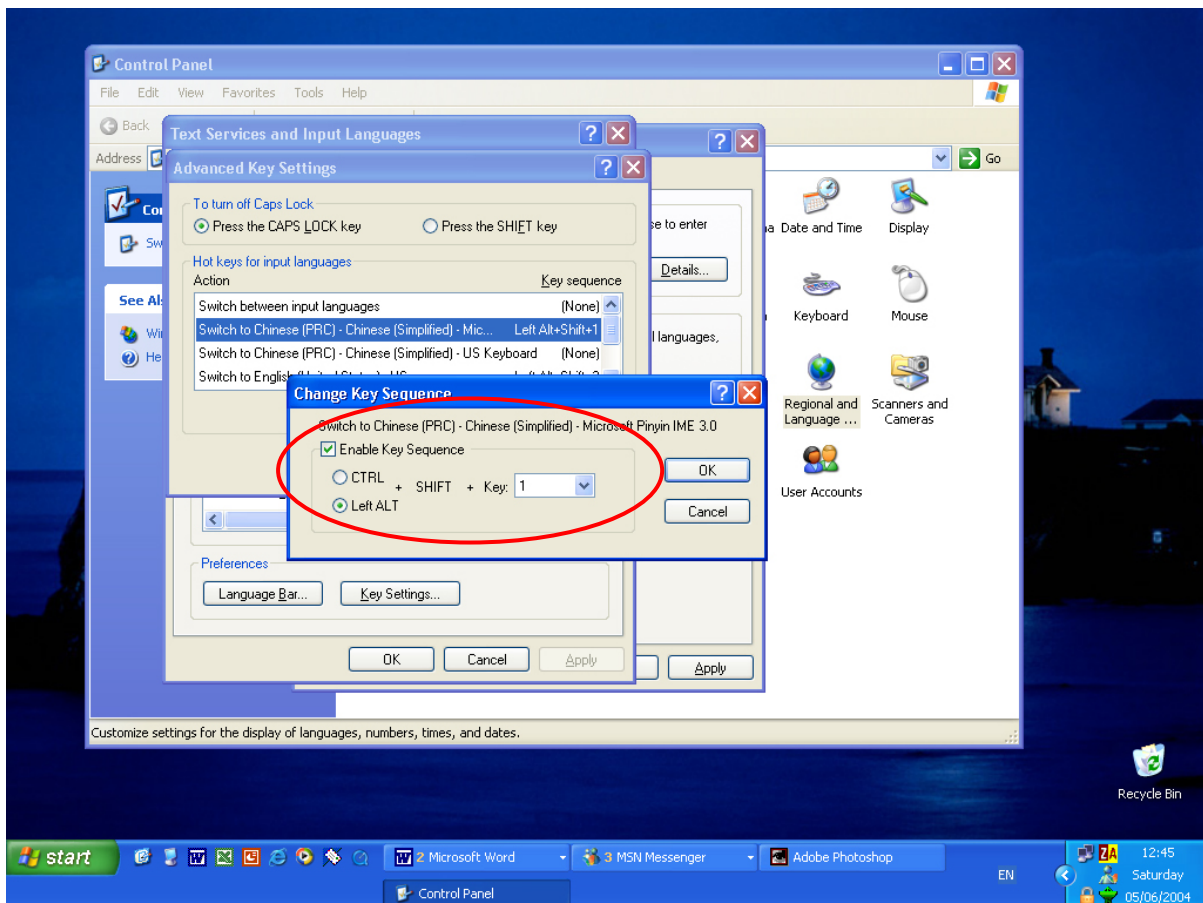
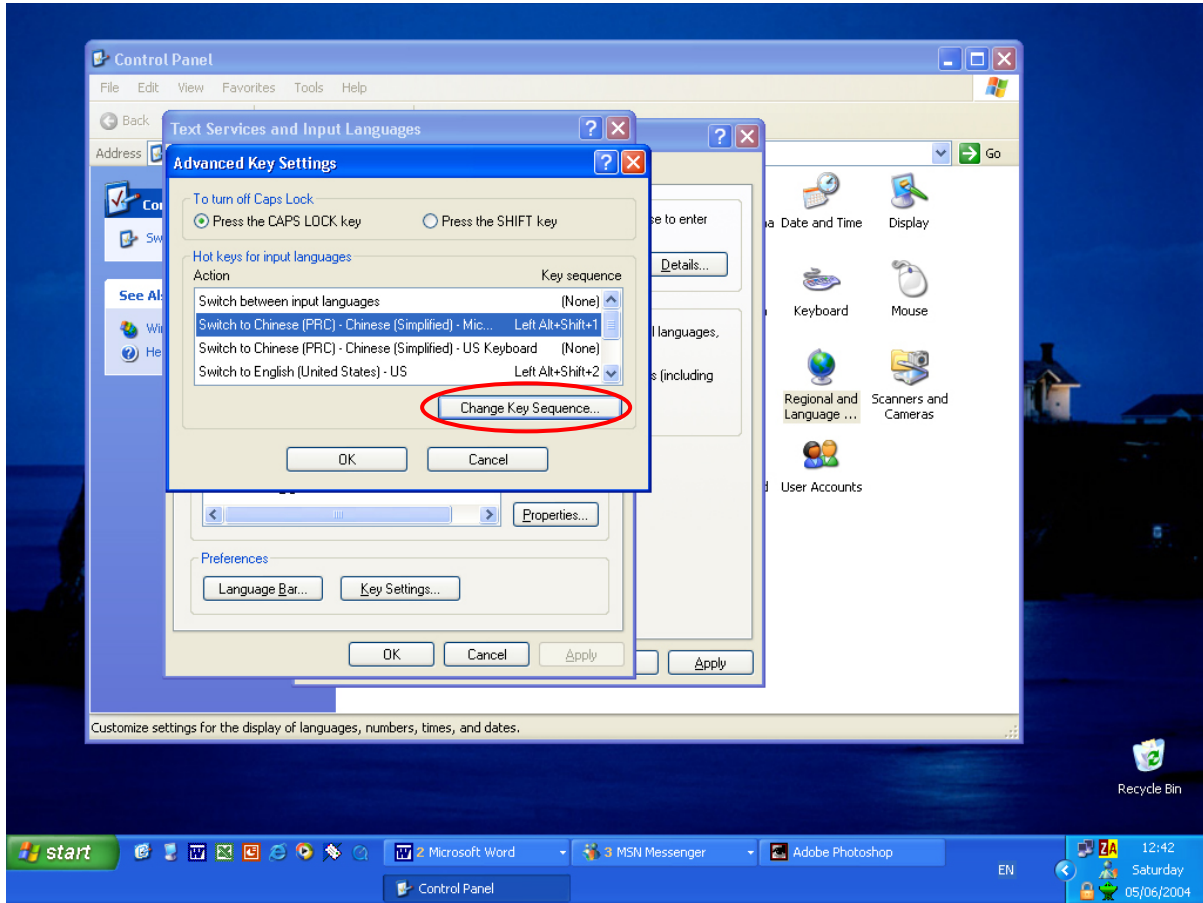
9. Ensure that “Enable learning”, “Enable user-defined phrase” and “Prompt step by step” are selected, then click “Ok”.



10. Under “Preferences”, click on “Key settings”.



11. Use “Change Key Sequence” to make the following 2 changes :
- For “Switch to Chinese (PRC) – Chinese (Simplified) – Microsoft Pinyin IME 3.0, enable Key Sequence “Left-Alt” + “Shift” + 1.
 - For “Switch to English (United States) – US, enable Key Sequence “Left-Alt” + “Shift” + 2.



12. Click on all the “Ok”s you can find and return to desktop.
13. You can now input Chinese in your favourite software (e.g. MSN messenger, MS Word etc.) by **holding down the keys** *Left-Alt* + Shift + 1 one after another together. You should use Hanyu Pinyin (汉语拼音) for your typing. To switch back to English anytime, just hold down *Left-Alt* + Shift + 2.
14. Have fun ! ☺